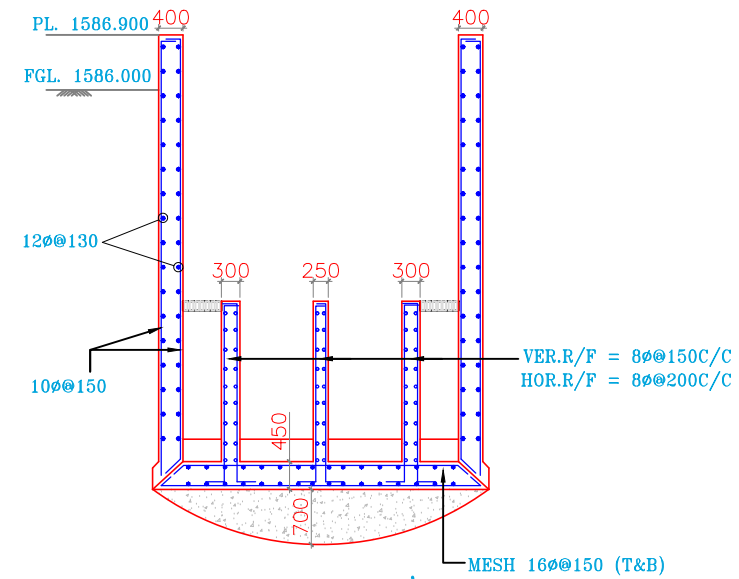
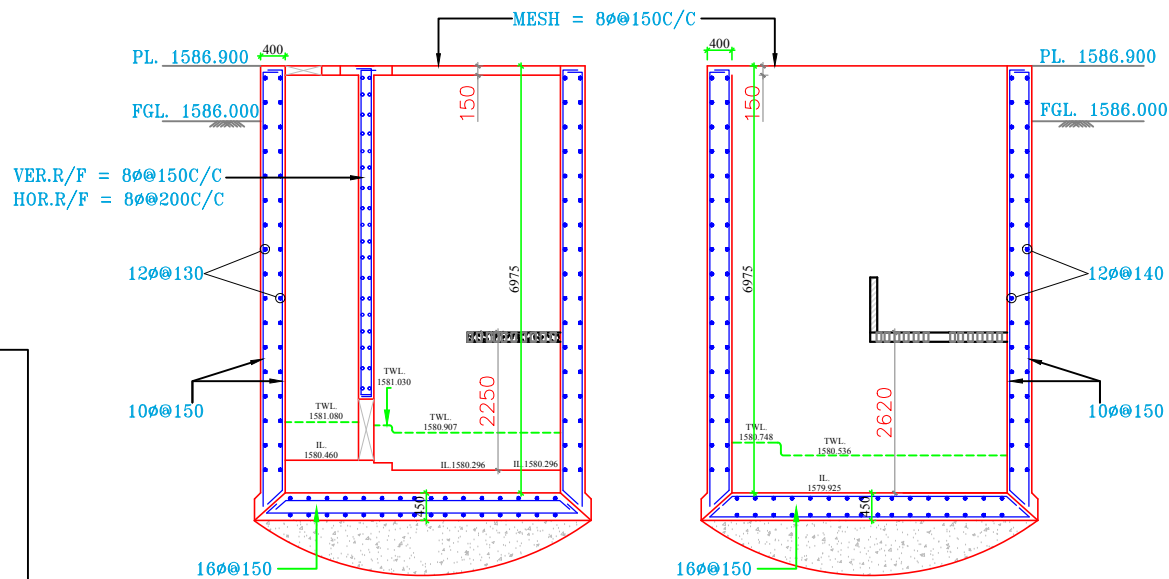


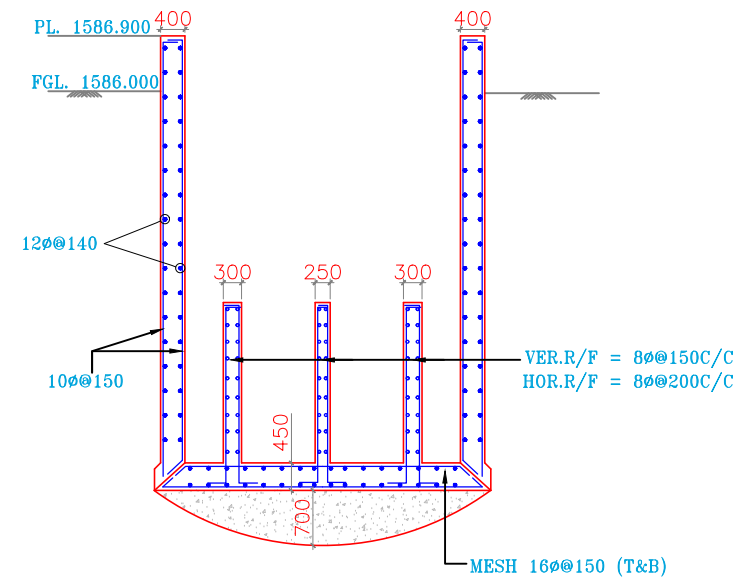
PLAN



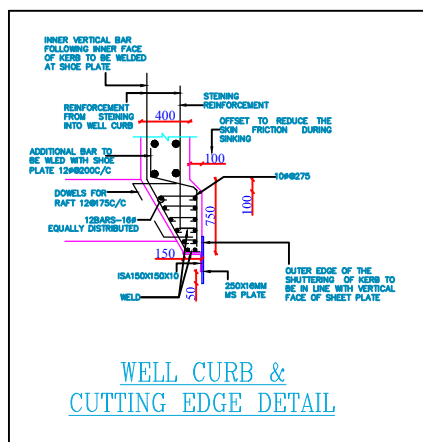
SECTION BB'



SECTION AA'



SECTION CC'




PROCEDURE OF WELL SINKING

- To prepare the ground for laying the cutting edge.
- To cast the well-curb after laying the cutting edge.
- To build the steining over the well-curb.
- To remove the earth from the well pocket by manual labour or by grabbing and thus to create a sump below the cutting edge level. The well will go down slowly
- To continue the process of building up the steining and the dredging in alternate stages. Thus the well sinks till the final founding level is reached.
- If necessary, kentledge load may be placed on the well steining to increase the sinking effort for easy sinking of the wells.

NOTES

- ALL DIMENSIONS ARE IN "MM" U.N.O.
- THE SBC AT 3M DEPTH HAS BEEN TAKEN AS 4.0T/SQM
- THE WATER TABLE AT 0.3M
- GRADE OF CONCRETE SHALL BE AS FOLLOWS:
 - STEINING WALL M30
 - WELL CURB M30
 - BOTTOM SLAB M30
 - BOTTOM PLUG M15
- GRADE OF STEEL SHALL BE AS FOLLOWS:
 - REINFORCEMENT BARS FE500
 - MS PLATE YST250
 - ANGLE YST250
- CLEAR COVER TO MAIN REINFORCEMENT SHALL BE AS FOLLOWS:
 - STEINING WALL 50MM
 - WELL CURB 50MM

DEPTT	PMU JTFRP		
PROJECT	STORM WATER DRAINAGE SCHEME BONPURA & PADSHAHI BAGH, ZONE - 1, SRINAGAR, (J&K)		
TITLE SCREEN CHAMBER SECTION & DETAILS FOR MPS (12.60M X 6.975 DEPTH)			WAPCOS LIMITED
DWG. NO. - WAPCOS/C/STR/02	DATE - 30.05.2019	REVISION : - R2	